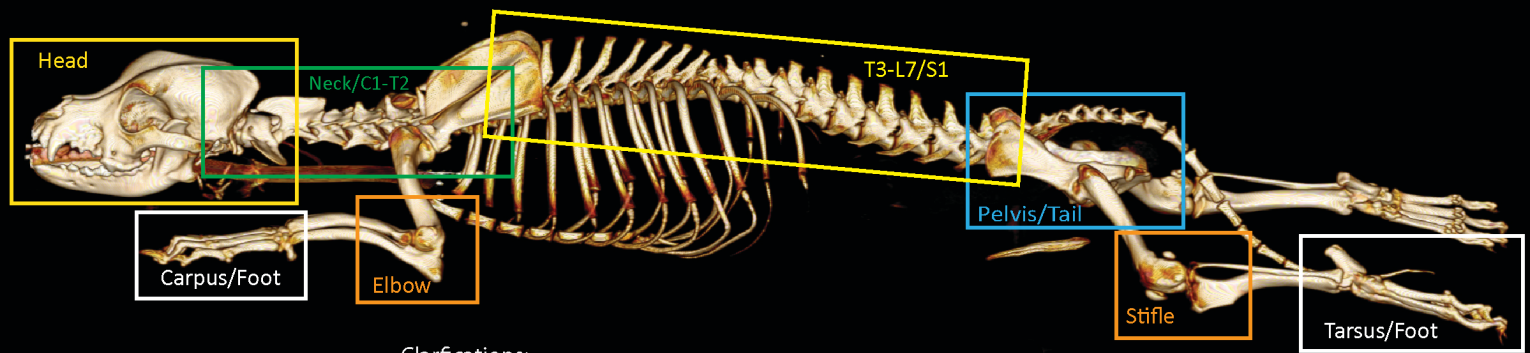
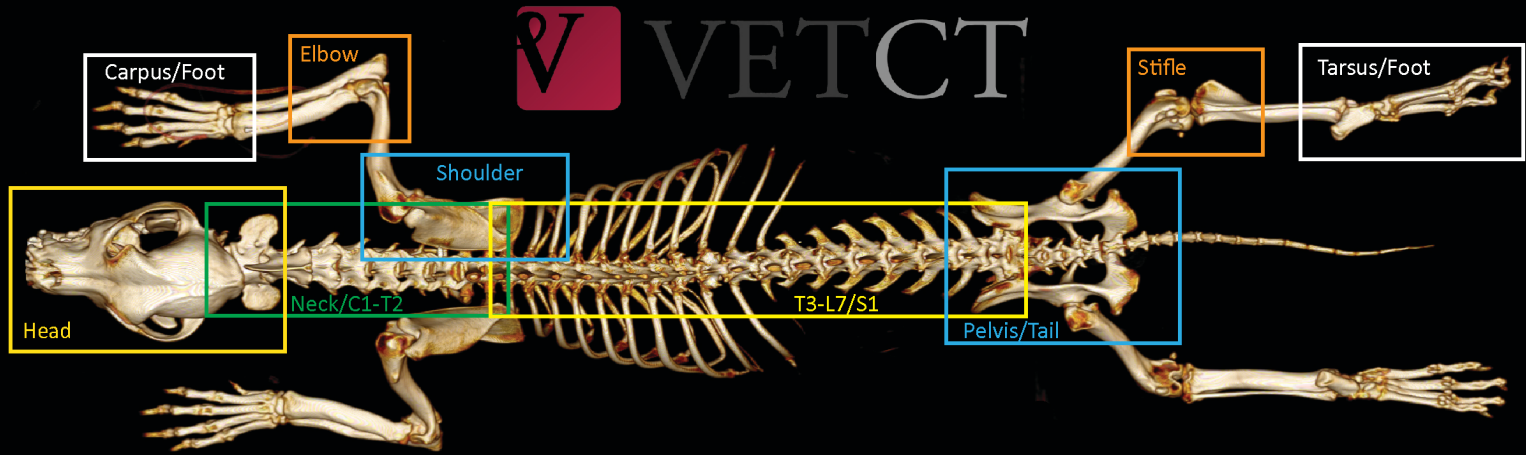


# Musculoskeletal Body Areas

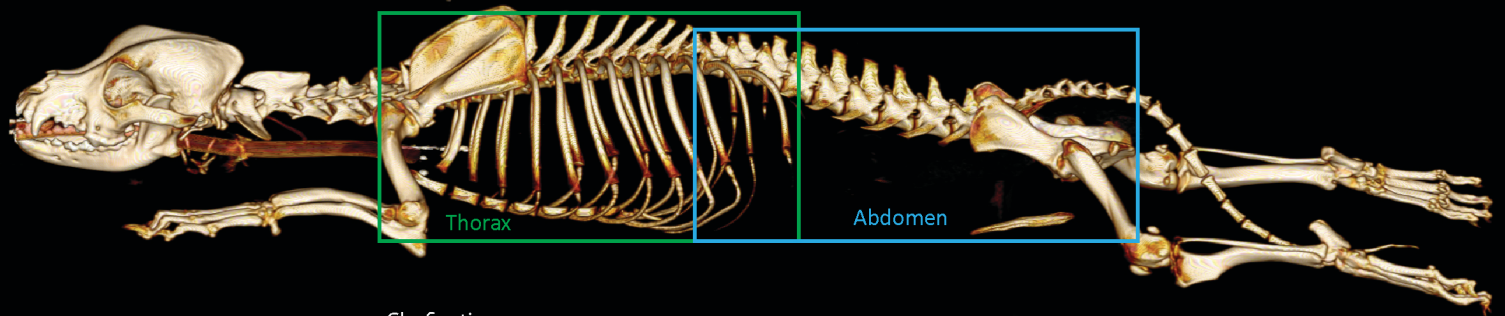


Clarifications:

- Head can extend caudally to C3, to include regional lymph nodes

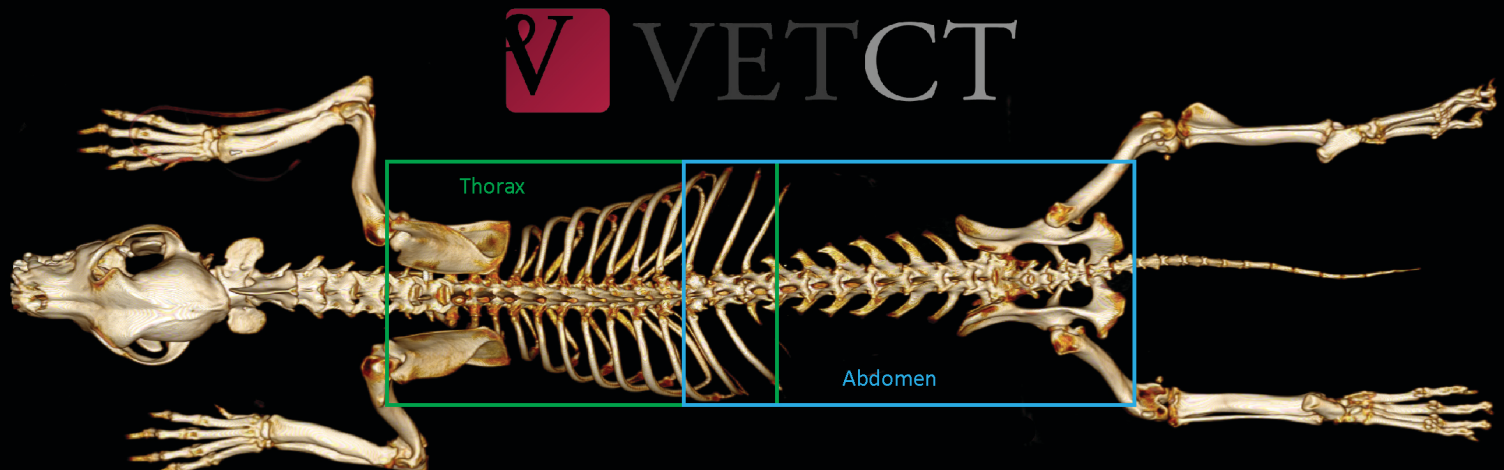


# Thorax & Abdomen Body Areas



Clarifications:

- Shoulders are included in the thoracic exam (not elbow joints)



\*\*\*Note these diagrams are for demonstrating anatomic body areas only, and do not demonstrate correct patient positioning